

Excellence in Assembly

NEWSLETTER

YEAR 6, NO. 2

'Leap into the future' for Metz

IPA has completed the turnkey delivery of an assembly line to the German television set manufacturer Metz of Zirndorf.

This is a 'leap into the future' for the customer and its latest LCD products, but also for its new assembly process. Every 120 seconds, a complete LCD television leaves the line, in one of many variable models, which is a significant efficiency improvement.

And the cutting edge technologies employed in this system will also enable the production of new models in the future.

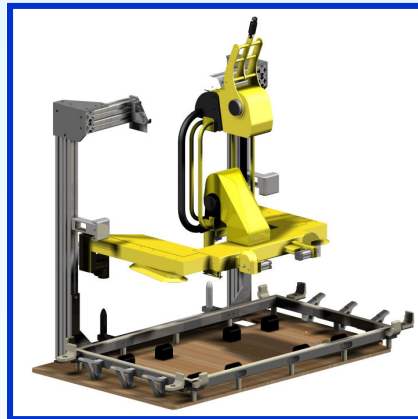


Overview of the Metz assembly line

IPA supplies the ultimate in flexibility with its product carriers & handlers

The product carriers are largely responsible for an assembly line's degree of flexibility. IPA therefore supplies carriers that can supply products to the operator with highly effective functionality.

The carriers can convey the working product (live). This enables a combination of transport and testing periods.

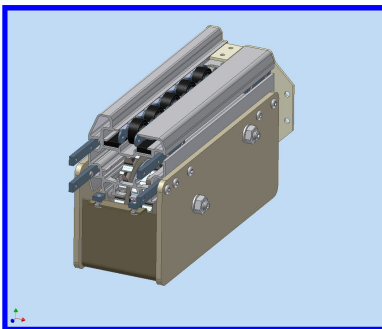


Product Handler with Carrier.

'Coming up':

- ◆ IPA participant in development project 'flexible operating unit'
- ◆ Optimisation project bath assembly system delivered
- ◆ Automation stator assembly

IPA improves and renews the VTS 100 conveyor system



Modified VTS100 system

IPA introduces the improved VTS 100-look, with an "extreme makeover". IPA customers are keen to ensure that their manufacturing system endorses the reputation of their products. This naturally includes an assembly system with a state-of-the-art look. IPA's modified system provides the ideal solution in this field.

COLOFON

IPA Projects & Services

Kosterij 4

1721 PN Broek op Langedijk

Tel: ++31(0)226-335010

Fax: ++31(0)226-335020

info@ipa-ps.nl

www.ipa-ps.nl

IMPROVING
YIELD
THROUGH
CREATIVE
TECHNOLOGY

If you wish to be removed from the mailing list, [click here](#).

For further details, please mail us at info@ipa-ps.nl